

Centered Tile

Product Type	Carpet Tile	
Collection	New Path	
Style Number	5T492	
Construction	Multi-Level Pattern Loop	
Fibre	Ecosolution Q100™ Nylon	
Dye Method	Solution Dyed	
Primary Backing	Polypropylene	
Secondary Backing	Strataworx® Tile	
Protective Treatments	SSP® Shaw Soil Protection	
	u.s.	metric
Product Size	18 in x 36 in	46 cm x 91 cm
Area Per Box	63 ft²	5.85 m²
Pieces Per Box	14 pcs	
Gauge	1/12 in	47.2 per 10 cm
Stitches	8.0 per in	32.5 per 10 cm
Average Density	6800 oz/yd³	0.252 g/cm³
Kilotex		9.16
Total Thickness	0.215 in	5.46 mm
Tufted Weight	17 oz/yd²	576.4 g/m²



Recommended Installation Method



Data + Testing

Radiant Panel (Astm E648)	Class I
Nbs Smoke	Less Than 450
Electrostatic Propensity	Less Than 3.5 kv
Cri Green Label Plus (GLP)	GLP2671
Pill Test	Pass*
Ada Compliance	>0.6, Meets the recommended static coefficient of friction for ADA walking surfaces and accessible routes***

Test Reports may be included or listed by the manufacturing/inventory style number as opposed to the noted selling style number.

Warranties

15 Year Commercial Limited

Coordinating Products

Carpet Tile: **Upbeat Tile, Positive Tile, Calm Tile**

Attributes + Certifications

Certifications Below Apply Exclusively To The Carpet Tile Rug Itself And Not The Lokworx Tabs Adhesive

Health & Wellbeing

Material Ingredient Transparency

Cradle to Cradle Certified® | Silver Level (Version 3.1)  
Health Product Declaration (HPD) | 1,000 ppm Disclosure  
Living Building Challenge (LBC) | Free of Red List Chemicals  
Declare | LBC Compliant  
NSF 140 | Gold  
CRI Green Label Plus (GLP) | GLP2671

Indoor Air Quality

Climate Impact

Environmental Product Declaration (EPD)

3rd Party Certified in Accordance with ISO14044, ISO14025 & EN15804

Embodied Carbon (Cradle to Gate)

4.6 kg CO<sub>2</sub>/m<sup>2</sup>

Life-Cycle Carbon Emissions

Carbon Neutral

Total Recycled Content

52% (Pre-Consumer 52% | Post-Consumer <1%)

Product Packaging

100% Recyclable

Global Product Assessment

Singapore Green Label | Certified  
Environmental Guarantee\* | Re[turn] Reclamation Program\* | Pickup & Delivery Available  
Country of Origin\*\* | USA

Green Leed Contribution Credit

MR Credit: Building Product Disclosure and Optimization  
Environmental Product Declarations - Option 1: Environmental Product Declaration (EPD)

3rd Party Certified in Accordance with ISO14044, ISO14025 & EN15804

MR Credit: Building Product Disclosure and Optimization  
Material Ingredients - Option 1: Material Ingredient Reporting

HPD (Version 2.1) or C2C Silver Level (Version 3.1)

MR Credit: Building Product Disclosure and Optimization  
Material Ingredients - Option 2: Material Ingredient Optimization

C2C Silver Level (Version 3.1)

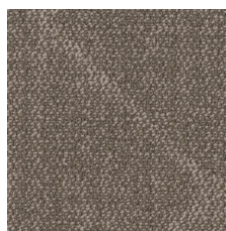
EQ Credit: Low Emitting Materials  
Option 1: Product Category Calculations

Green Label Plus Certification: GLP2671

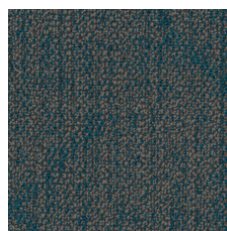
### Available Colorways



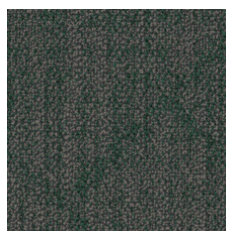
Bubbly 90100



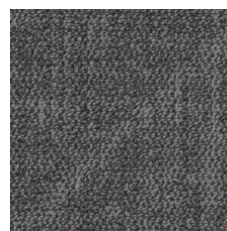
Satisfied 90111



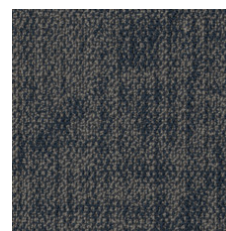
Refreshed 90323



Optimistic 90375



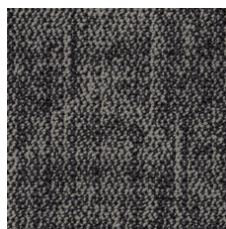
Strong 90481



Confident 90486



Mysterious 90500



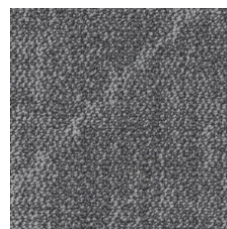
Spontaneous 90505



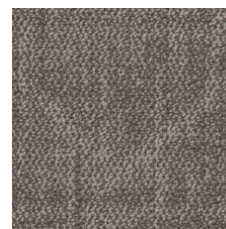
Grateful 90518



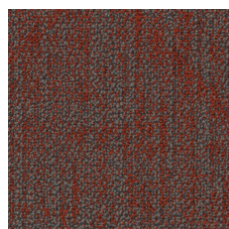
Empowered 90555



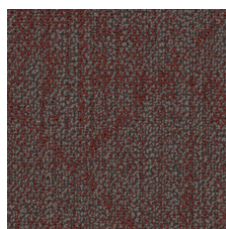
Focused 90580



Delightful 90780



Expressive 90865



Cheeky 90870

### Additional Information

\* To learn more about the recyclability of our products and our Environmental Guarantee, please visit [shawcontract.com/sustainability](https://shawcontract.com/sustainability).

\*\*Meets or exceeds all local and national regulations in country of manufacture.

\*\*\*This carpet is manufactured to be ADA compliant, but to be fully ADA compliant, the end-user must ensure the carpet is adhered to the floor and installed as outlined in the ADA standards.

[Installation Guidelines](#)

[Maintenance Guidelines](#)

Specifications are subject to nominal manufacturing variance. Material supply and/or manufacturing processes may necessitate changes without notice.

This product is an exclusive design and may not be duplicated in any manner. Use of this design in the creation of another product design is also strictly prohibited.

Visit [shawcontract.com/testing](https://shawcontract.com/testing) for more information.



**PVC-Free**

Corporate Headquarters +1 800 257 7429 | +1 706 532 7984 | Atlanta +1 404 853 7429 | Bengaluru +91 80 6773 0202 | Beijing +86 10 6568 588 | Chicago +1 312 467 1331 | Dubai +971 4 584 6956 | Hong Kong +852 2623 0371 | Latin America (Miami) +1 305 827 5912 | London +44 207 961 4120 | Los Angeles +1 800 233 1614 | Melbourne +61 3 9939 8543 | Mexico City +55 5010 7600 | Mumbai +91 22 6284 5050 | Nantong +86 400 800 7429 | New York +1 212 953 7429 | Paris +33 (0) 1 81 22 44 39 | San Francisco +1 415 955 1920 | Santiago +562 2431 5000 x 550 | São Paulo +55 11 3071 1702 | Shanghai +86 21 3338 4000 | Singapore +65 6733 1811 | Sydney +1 800 556 302

© 2024 Shaw Industries Group, Inc., a Berkshire Hathaway Company  
May 19, 2024

3 of 3